

Corners to be Indexed

E1/4 3-108-42

STATE OF MINNESOTA, } ss.  
COUNTY OF MURRAY, }

I hereby certify that this document and the data contained herein was prepared by me or under my direct supervision.

Jerry G. Johnson 1-31-2019  
License No. 50343 Date

I hereby certify that the within Instrument was filed in this office for record on the 5TH day of FEBRUARY A.D. 20 19 at 9:00 o'clock A. M. and was duly recorded as Document No. \_\_\_\_\_

Evelyn C. Larson  
County Recorder

### CERTIFICATE OF LOCATION OF GOVERNMENT CORNER

Land survey monuments situated in Section 3, Township 108, Range 42, 5TH P.M.

STATE OF MINNESOTA, County of MURRAY

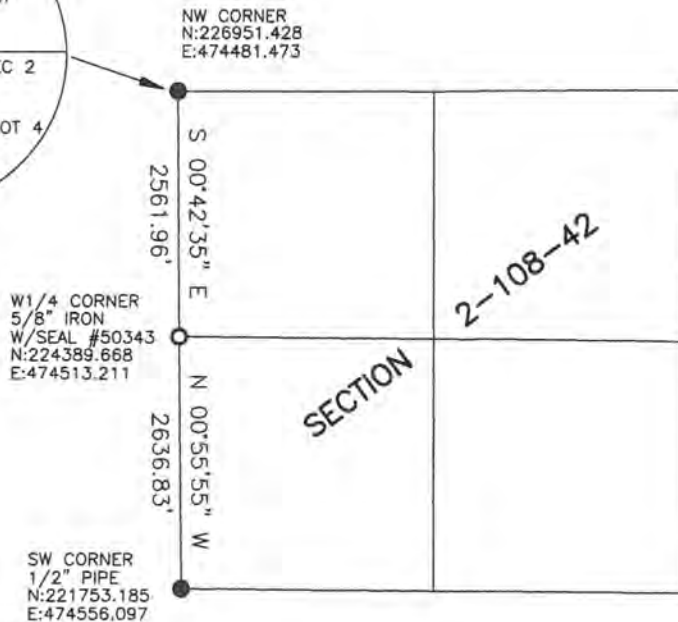
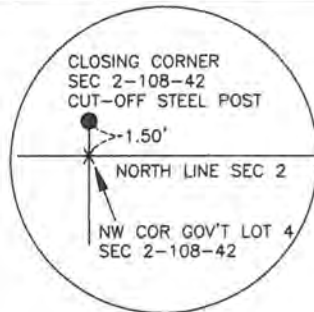
#### STATEMENT OF EVIDENCE:

In 1861, L.G.W. Fletcher did the original subdivision of the township.

On March 22, 2018, Bueltel-Moseng Land Surveying set a 5/8" iron with seal #50343 proportionate distance from the northwest corner and in the center of the road. It is in line with the fence to the west.



- FOUND MONUMENT
- SET MONUMENT



Minnesota State Plane Coordinate  
System Murray County Datum NAD83 (1996)